

NEW LONDON POLICE DEPARTMENT 2015 REPORT

MISSION STATEMENT/WELCOME

"It is the mission of the New London Police Department to deliver the highest quality of law enforcement services to the people it serves, in the most efficient manner possible, to provide protection of life and property, and to give our community the quality of life it deserves to be and feel safe."



Chief's Welcome Statement

I am very excited to have the opportunity to serve the citizens of New London as the Chief of Police for the past 6 1/2 years. I was born and raised in the City of New London and graduated from New London Senior High School. I left for a few years while I attended and graduated from the University of Minnesota Minneapolis with a double major in Law, Criminology, and Deviance and Political Science. After graduating from college I was offered a police officer position with the New London Police Department and started my career here in January of 1996.

The New London Police Department is a progressive agency committed to serving the citizens of New London. The officers of the New London Police Department work hard for the citizens and have a very high clearance rate on major crimes. The New London Police Department has 17 sworn officers. The officers fill positions that include Supervisory Staff, Detective, SWAT, Police School Liaison, Drug Unit Investigator, Field Training Officers, Firearms Instructor, DAAT Instructor, and ICAC Investigator. Our new hires are required to complete a 3 month Field Training Program before they are allowed to patrol on their own.

I hope our annual report is able to answer questions and provides you a better insight to the New London Police Department. If you have any suggestions as to how we can improve, or how we can better serve the community of New London, please let us know.

Thanks,

Chief Jeffrey A. Schlueter

NLPD STRUCTURE/POLICE AND FIRE COMMISSION

The New London Police and Fire Commission operates under Optional Powers which are established by Wisconsin State Statute 62.13(6).

2015 Police and Fire Commissioners:

Lund Cooley

Tom Schmude

Joel Kable

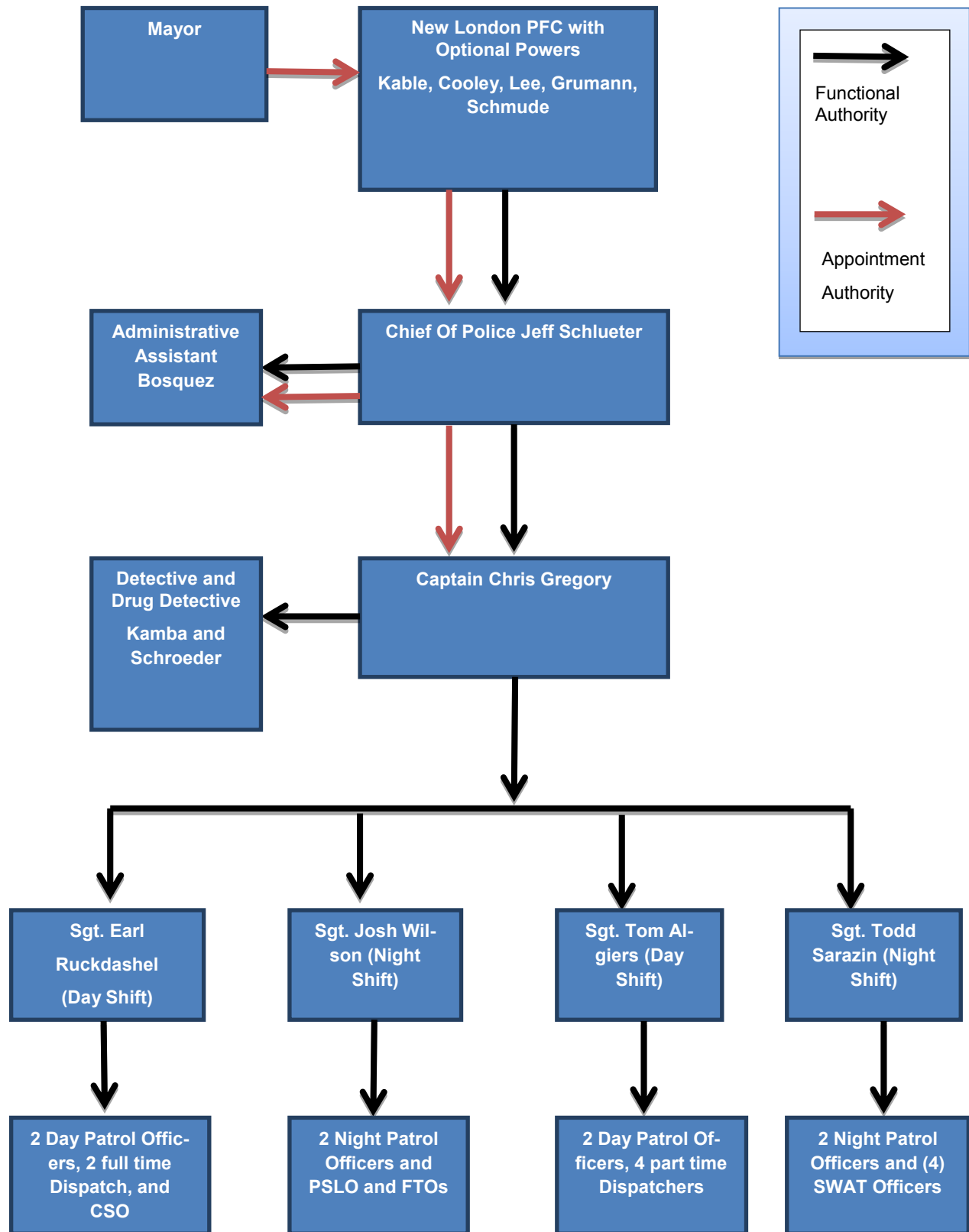
John Lee

Al Grumann

The New London Police Department currently has 17 sworn officers, 2 full-time dispatchers, 4 part-time dispatcher and a part-time administrative assistant.

Police Department Personnel

<u>Name</u>	<u>Rank/Badge Number</u>	<u>Year Hired</u>
Jeremy Mulroy	Officers #16	2014
Ryan Gloe	Officer #17	2015
Josh Wilson	Staff Sergeant #18	2001
Tom Algiers	Staff Sergeant #19	1987
Brody Erickson	Officer #20	2015
Ben Schmidt	Officer #21	2006
Todd Sarazin	Staff Sergeant #23	2001
Brent Seavecki	Officer #24	2015
Chris Gregory	Captain #25	1994
Earl Ruckdashel	Staff Sergeant #26	1990
Ryan Denu	Officer #27	2008
Mike Harlow	Officer #28	2006
Chase Schroeder	Detective #29	2011
Chris Dearth	PSLO #30	2012
Cheri Johnson	Officer #31	1992
Nick Kamba	Detective #32	2010
Jeff Schlueter	Chief #34	1996
Lisa Gorman	Dispatcher	2000
Lisa Fenske	Dispatcher	2010
Cathy Martins	Dispatcher	2007
Carson Faulkner	Dispatcher	2015
Shelby Patterson	Dispatcher	2015
Kirk Merrill	Dispatcher	2014
Ashley Bosquez	Administrative Assistant	2007



2014-2015 Changes in Personnel

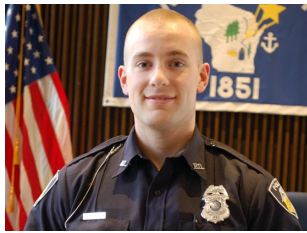
Retirements: Captain Jay Zempel
1984-2014



Sergeant Dave Klinzing
1985-2015



2014-2015 New Officers



Officer Jeremy Mulroy



Officer Brent Seavecki



Officer Brody Erickson



Officer Ryan Gloe

Officers Tom Algiers and Josh Wilson were promoted to Staff Sergeant.

Officers Chase Schroeder and Nick Kamba were promoted to detective.

Officer Chris Dearth was promoted to the position of School Liaison Officer.

Police Administration

The Administration Division consists of the Chief of Police, Captain, 4 Staff Sergeants. This division is responsible for the coordination and direction of the department. A large task of this division is budgeting, fiscal management, developing and managing department policy, and creating and maintaining city ordinances involving public safety. The Administrative Division also coordinates the management of personnel from recruitment to promotions and internal investigations. Training, scheduling, and purchasing is also a function of this division. The 4 Staff Sergeants work a patrol shift and are typically on duty between 6am-5pm, 5pm-4am, or 7pm-6am: 7 days a week. The Chief of Police, and Captain typically work Monday-Friday.

Patrol

The patrol division is the heart of the New London Police Department. The patrol division is responsible for handling the majority of emergency and non-emergency calls, along with enforcing traffic laws throughout the City of New London. Our patrol division is also responsible for investigating and following up on complaints assigned to them.

The New London Police Department currently has 8 officers and 4 Staff Sergeants assigned to this division. This division works 11 hour shifts, on a 5 day on-5 day off schedule, and provides 24 hour coverage. At any given time there are between 2 and 4 officers patrolling the City of New London.

The New London Police Department Patrol Fleet is comprised of 2 marked squads, 1 marked SUV and 1 unmarked squad.

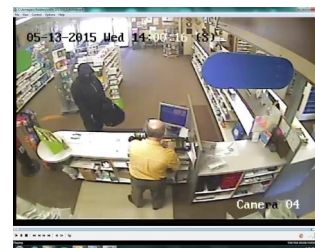


Investigations

Criminal investigations are an important aspect of the New London Police Department. Each New London Police Officer is trained to conduct thorough and complete investigations. Officers in the patrol division routinely conduct investigations and frequently resolve issues without assistance from an investigator. Those investigations that require additional assistance are forwarded to an investigator. The investigators report directly to the Captain.

The New London Police Department Investigative Division consists of 1 Detective assigned to major crimes and 1 Detective assigned to the Lake Winnebago Drug Unit.

In 2015, the New London Police Department arrested John Brush for the death of a 3 year old child and Anthony Trentlage for the armed robbery at Jernegan's Health Mart. In these cases our agency posted information on Facebook. The information and tips from the citizens helped us in our investigations.



SWAT TEAM



The New London Police Department is part of the Waupaca County Emergency Response Unit. The New London Police Department has 5 members on the Waupaca County SWAT Team.

In 1985 the Waupaca County Sheriff's Department, in cooperation with all Law Enforcement agencies within the County, formed the first Tactical Team in Waupaca County history. The team was named: the Waupaca County Emergency Response Unit (ERU).



The team is multi-jurisdictional and comprised of members from the Sheriff's Department and officers from various agencies within Waupaca County .

All members are FBI trained and are members of the Wisconsin Association of SWAT personnel.

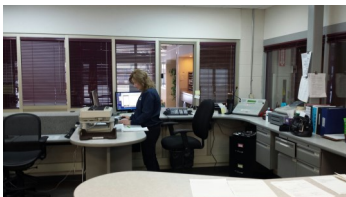
The SWAT Team possess state of the art equipment including a Command Post, Armored Vehicle, Equipment Vehicle, various entry tools and weapon delivery systems. The primary goal of this team is to contain, control and resolve situations as effectively and efficiently as possible while protecting life and minimizing the risk of injuries to all persons involved.

LAKE WINNEBAGO MEG UNIT



The New London Police Department has 1 officer assigned to working drugs. The officer is assigned to the Lake Winnebago Area Metropolitan Enforcement Group which is a collection of investigators from local law enforcement agencies within Outagamie, Winnebago, Fond du Lac, and Calumet Counties, dedicated to helping maintain a drug free environment in which our citizens can thrive.

DISPATCH



The New London Police Department Dispatch Center is open from 8am to midnight 365 days a year. From midnight to 8am the Waupaca County Sheriff's Department dispatches for the New London Police Department.

Dispatchers are generally the first point of contact for the public when they come in to our lobby or phone into the New London Police Department. Dispatchers dispatch officers to calls of service and provide support for the patrol officers by searching data bases and providing the information to the officers out on the road. Dispatchers also maintain report and citation records by adding the information into our computer system and by archiving old reports into Laserfiche.

The New London Police Department Dispatch Center also acts as the back up facility for Waupaca County in the event that the Waupaca County Communications Center has to close down.

The New London Police Department Dispatch Center can also issue license plates.

2015 NEW LONDON POLICE DEPARTMENT EXPENDITURE BUDGET

3-01-2016 09:37 AM

CITY OF NEW LONDON
EXPENDITURES REPORT (UNAUDITED)
AS OF: DECEMBER 31ST, 2015

PAGE: 19

101-GENERAL FUND
POLICE

DEPARTMENTAL EXPENDITURES	CURRENT BUDGET	CURRENT PERIOD	YEAR TO DATE ACTUAL	% OF BUDGET	BUDGET BALANCE
101-52101-119 SALARIES	1,152,154.00	85,466.94	1,109,059.84	96.26	43,094.16
101-52101-129 PART TIME DISPATCH/OFFICE	36,000.00	4,698.62	43,571.52	121.03 (7,571.52)
101-52101-139 OVERTIME	88,000.00	6,575.43	86,720.30	98.55	1,279.70
101-52101-149 DIFFERENTIAL	11,000.00	751.45	10,219.52	92.90	780.48
101-52101-151 LONGEVITY	22,300.00	0.00	21,200.00	95.07	1,100.00
101-52101-169 HOLIDAY	33,000.00	7,449.37	34,615.85	104.90 (1,615.85)
101-52101-181 OCCASIONAL LABOR	9,000.00	1,337.75	7,050.11	78.33	1,949.89
101-52101-195 FRINGE BENEFITS	491,241.00	34,727.87	436,710.90	88.90	54,530.10
101-52101-196 RETIREMENT	25,000.00	2,007.32	66,759.76	267.04 (41,759.76)
101-52101-201 OFFICE SUPPLIES	3,000.00	247.12	2,917.47	97.25	82.53
101-52101-202 POSTAGE	1,500.00	55.27	1,080.04	72.00	419.96
101-52101-203 DUES AND SUBSCRIPTIONS	800.00	0.00	786.50	98.31	13.50
101-52101-205 OFFICE EQUIPMENT & MAINTEN	5,500.00	4,689.55	8,108.72	147.43 (2,608.72)
101-52101-206 PRINTING AND FORMS	1,000.00	0.00	1,286.75	128.68 (286.75)
101-52101-207 SOFTWARE	10,000.00	585.72	7,301.60	73.02	2,698.40
101-52101-212 TRAINING	10,000.00	1,247.94	9,044.78	90.45	955.22
101-52101-221 HEATING	9,000.00	614.16	5,756.99	63.97	3,243.01
101-52101-222 TELEPHONE	7,500.00	1,500.20	11,038.58	147.18 (3,538.58)
101-52101-227 ELECTRIC, WATER, & SEWER	18,000.00	2,459.41	16,879.02	93.77	1,120.98
101-52101-232 INSURANCE	923.00	0.00	923.00	100.00	0.00
101-52101-241 AMMO AND RANGE	4,000.00	1,670.92	3,522.99	88.07	477.01
101-52101-243 CAMERA SUPPLIES	700.00	0.00	875.75	125.11 (175.75)
101-52101-250 CONSULTANT	1,500.00	325.00	2,933.00	195.53 (1,433.00)
101-52101-271 GASOLINE	39,000.00	2,937.90	21,691.68	55.62	17,308.32
101-52101-275 TELETYPE LEASE	2,000.00	7.00	1,461.00	73.05	539.00
101-52101-280 PATROL EQUIPMENT	5,000.00	1,129.31	5,682.40	113.65 (682.40)
101-52101-281 INVESTIGATIVE EQUIP/SUPPLY	2,500.00	684.75	2,083.03	83.32	416.97
101-52101-282 ERU FEES/EQUIPMENT/MEG	5,000.00	2,586.40	4,702.97	94.06	297.03
101-52101-283 BUILDING MAINTENANCE	3,500.00	3,240.00	5,567.57	159.07 (2,067.57)
101-52101-309 SUNDRY	3,500.00	434.47	3,219.97	92.00	280.03
101-52101-310 POLICE AND FIRE COMM SUNDR	100.00	0.00	105.00	105.00 (5.00)
TOTAL POLICE	2,001,718.00	167,429.87	1,932,876.61	96.56	68,841.39

For 2015 the Police Department ended up \$68,841.39 under budget for the line items.

In 2015 the Police Department only had 1 capital project, the purchase of 2 new Ford Interceptor SUVs for about \$65,000 (which included the switch over of the vehicles).

2015 NEW LONDON POLICE REVENUE

When the New London Police Department generates revenue it typically goes into the general budget and does not go back into the Police Department line expenditures that it came out of.

Police School Liaison Officer: \$60,000

The New London Police Department invoices the New London School District every year for the services of the Liaison Officer.

Citations and Court Fees: \$97,654.41

License Plate Sales: \$6,227.66

Parking Tickets: \$6,216

Weyauwega Citations: \$13,573.69

In 2012 the New London Police Department spoke to the City of Weyauwega about joining the New London Municipal Court which brings in extra revenue to the City of New London.

2015 GRANTS AND DONATIONS

Maddie Kloehn raised \$1,600 to help the NLPD purchase a defibrillator.



\$942 Federal Grant for the purchase of 3 new bullet proof vests

\$2,400 from the State of Wisconsin for training reimbursement

OWI Grant with Waupaca County +/- \$2000/month

\$5,000 grant from CVMIC for the purchase of the VieVu Body Cameras

COMMUNITY RELATIONS



Prescription Drug Drop Box: The New London Police Department has a permanent drop box located in the lobby. People can drop off old prescription drugs 365 days a year from 8am-midnight. In 2015 we collected 830 pounds of prescription drugs.



The New London Police Department Explorer Program is for young adults who want to learn more about law enforcement careers by visiting work settings, talking with professionals, and training certain law enforcement activities. The Explorer program is affiliated with the Boy Scouts of America and each group plans their own activities around the interest of its members. In 2015 they provided 406 hours of community service.



The New London Police Department maintains a website and Facebook page to keep the public informed and to provide information of services that the police department provides. The police department has used Facebook postings to help solve crimes.



Website: http://www.newlondonwi.org/departments/police_department.php

Facebook: <https://www.facebook.com/pages/New-London-Police-Department/140266156076390>

The New London Police Department has put on in-service programs for the New London School District, Bemis, and Theda Care on active shooters in the work place.



The New London Police Department puts on seminars for the banks in New London on counterfeit money and robberies.

The New London Police Department has put on numerous programs around the area on internet safety for children and parents.

Every year officers give presentations on drug use and abuse in the New London area to students of the New London School District.

COMMUNITY RELATIONS



All officers are assigned to do random walk throughs of the schools in the New London School District while on patrol. This assignment has allowed the children to become more acquainted with the officers and has made them, the staff, and families feel safer sending their children to school. In 2015 the New London Officers walked through the schools 434 times.

Each year the New London Police Department checks on about 75 residences for people who are on vacation. Officers drive past and walk around the house to ensure there are no issues while people are on vacation.



New London officers respond to all ambulance calls in the City of New London. Our officers are trained in CPR and we carry defibrillators in all of our marked squads. It is estimated that 75% of our officers have administered CPR or used the defibrillator at least 1 time in their career. New London Officers responded to 228 medical calls in 2015.

The New London Police Department assist with about 50 funeral escorts a year. This allows for a safe escort from the funeral to the place of rest.

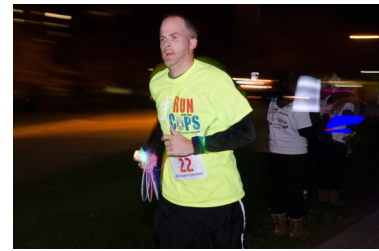


The New London Police Department is also responsible for coordinating parades, car show traffic and charity runs. On average the New London Police Department shuts down local roads and provides traffic control for about 8-10 events a year. Some of the events include the St. Patrick's Day Parade, Homecoming, parade, Christmas Parade, Memorial Day Parade, 2 car shows, a couple of charity runs and 3 motorcycle rides that come through New London each year.



The New London Police Department provides a free bike license for anyone who wishes to register their bike. Numerous bikes have been returned to their owners because they were registered and licensed through the police department.

In 2015 the New London Officers continue to be very involved in the community. The officers continue to participate in events and organization such as: Shop with a Cop, The Torch Run, Run with a Cop, coach local athletic teams, participate in local athletic groups, and community organizations.



Explorer Competition

On Saturday, April 18th, 2015 the New London Police Explorers participated in the Fox Valley Law Enforcement Exploring Competition at the New Fox Valley Technical College Public Safety Training Center in Appleton. They participated in 7 scenarios, OWI Traffic stop, Emergency First Aid, Crime Prevention, Use of Force, Crime Scene, Bomb Threat, and Active Shooter. There were also individual events including a law test, and physical agility test. Out of 17 participating post, we placed 3rd in Crime Scene, 2nd in our Crime Prevention Presentation, and 1st in the Use of Force Scenarios. Everyone did a great job. The City of New London and the Police Department was represented well. Congratulations to the Explorers!



New For 2015

Body Cameras

In 2015 the New London Police Department purchased body cameras for the officers to wear while on duty. The Police Department purchased the cameras from VieVu in 2015. The New London Police Department received a \$5,000 grant from CVMIC to help offset the cost of the Cameras.



MACH

The Mach system has been installed in all the marked squad computers and dispatch station. Mach allows us to locate the squads in live time by GPS.

Plate Carriers

The New London Police Department placed armor plate carriers in all of the squads cars to provide extra protection to the officers in the event of an active shooter situation.

New Policy

Since 2013 the New London Police Department Administration has been working with an outside agency to restructure the Police Department's Policy and Procedure Book. This Policy Book meets the standards for Accreditation.

Ford Interceptor SUV

By 2016 the New London Police Department will have all Ford Interceptors for marked patrol squads.

Undercover Officer in the New London High School

During the spring of 2015 the New London Police Department worked with the New London School District Administrators and placed an undercover officer in the High School after hearing numerous reports about drug activity in the school. During the investigation the officer was able to identify two subjects that were involved with selling marijuana at the school. The investigation lead to the arrest of those two subjects, but we were also able to identify that the school is a safe place for the children of New London to get the education that they deserve. We will continue to work closely with the school district to resolve issues as they come up.

Community Service Officer

In 2015 the New London Police Department added a Community Service Officer to the Police Force. Shelby Patterson was the Community Service Officer for 2015. Shelby is currently attending FVTC for Police Science. Some of her duties include enforcing parking violations, city ordinances, traffic control, animal pick-up, and assisting in the office.

CALLS FOR SERVICE 2015

In 2015 the New London Police Department responded to 6,160 calls for service. Incident descriptions are assigned when a call originally comes into dispatch and officers are dispatched to an incident. (Example: a welfare check might turn into a child abuse case., but it would be listed as a welfare check on descriptions below.

Agency: #Error
 Start Date: 1/1/2015 12:00 AM
 End Date: 1/1/2016 12:00 AM
 City: , APPL, manawa, OBLCT, OBRV, OHORT, OLIBT, OMPCT, ONEWL, ONICV

Incident Count by Incident Type

Incident Type Description	Incident Count
TRAFFIC STOP	1079
ASSIST	437
CRIME PREVENTION	434
MOTORIST ASSIST	347
MISCELLANEOUS	325
DISTURBANCE	312
WELFARE CHECK	290
ANIMAL	239
MEDICAL	228
PARKING COMPLAINT	196
THEFT	172
TRUANCY	155
ACCIDENT	153
SUSPICIOUS SITUATION	137
ORDINANCE	119
RECKLESS DRIVING	116
SUSPICIOUS PERSON	107
HARASSMENT	104
911 HANG UP	101
JUVENILE COMPLAINTS	99
SUSPICIOUS VEHICLE	99
TRANSPORT	97
DAMAGE TO PROPERTY	81
ALARM	77
NOISE COMPLAINT	73
WARRANT	68
TRAFFIC HAZARD	51
DOMESTIC DISTURBANCE	41
FRAUD	37
LOST / FOUND	34
DRUGS	34
911 ASSIST	31
SEX OFFENSE	26
FIREWORKS	25
CIVIL MATTER	23
BURGLARY	21
TRESPASSING	20
OPEN DOOR	20
RUNAWAY	19

Report Name: P1 Incident Count by Incident Type
 Run Date: 1/28/2016 2:49:11 PM

Page 1 of 2

Agency: #Error
 Start Date: 1/1/2015 12:00 AM
 End Date: 1/1/2016 12:00 AM
 City: , APPL, manawa, OBLCT, OBRV, OHORT, OLIBT, OMPCT, ONEWL, ONICV

Incident Count by Incident Type

EMERGENCY COMMITTAL	19
DISORDERLY CONDUCT	18
BUILDING SECURITY	12
BATTERY	11
VIOLATION OF COURT ORDER	10
ALCOHOL	9
TEST INCIDENT LAW	7
CIVIL PROCESS	6
AUTO THEFT	5
RETAIL THEFT	5
WEAPON	4
DEATH	4
MISSING PERSON	4
FIRE CALL	3
COMPUTER CRIME	3
FIRE ALARM	2
BOMB THREAT	2
ACCIDENT WITH INJURY	2
24/7 INCIDENT	2
ABANDONED VEHICLE	2
ROBBERY	2
BOAT PATROL	1
Total	6,160

Report Name: P1 Incident Count by Incident Type
 Run Date: 1/28/2016 2:49:12 PM

Page 2 of 2

Statewide Clearance Rate Averages:

61% - Murder
 52% - Rape
 26% - Robbery
 61% - Aggravated Assault
 17% - Burglary
 37% - Theft
 11% - Motor Vehicle Theft
 23% - Arson

Use of Force

In 2015 the New London Police Department had 23 incidents which involved a Use of Force.. After each Use of Force incident the officers are required to fill out a report and it is reviewed by the supervisors A Use of Force Incident would include: Empty Hand Control, OC, Baton, Pointed ECD (Taser), Deployed ECD, Pointed Firearm, or Discharged Firearm. In 2015 the New London Police Department had 12 empty hand incidents, deployed the ECD (Taser) 4 times, and pointed the ECD or firearm at subjects 7 times.

Uniform Crime Reporting (UCR) 2015 Data Comparison Report

Agency: New London Police Department

Completed Months of 2015 Data: 12

Offenses

	2011	2012	2013	2014	2011-14 avg	2015
Murder	1	0	0	0	0	0
Rape	3	1	1	1	2	1
Robbery	1	0	0	0	0	1
Aggravated Assault	7	6	7	21	10	4
Simple Assault	41	29	24	24	30	15
Burglary	18	26	25	13	21	13
Theft	128	122	138	119	127	102
Motor Vehicle Theft	6	1	3	4	4	1
Arson	0	1	1	2	1	1

Clearances

	2011	2012	2013	2014	2011-14 avg	2015
Murder	100%				100%	
Rape	33%	300%	100%	0%	83%	0%
Robbery	100%				100%	100%
Aggravated Assault	86%	83%	100%	95%	93%	75%
Simple Assault	76%	90%	96%	67%	81%	67%
Burglary	67%	15%	56%	31%	41%	15%
Theft	32%	25%	32%	18%	27%	25%
Motor Vehicle Theft	83%	100%	100%	75%	86%	0%
Arson		0%	100%	100%	75%	100%

Arrests

	2011	2012	2013	2014	2011-14 avg	2015
Murder	2	0	0	0	1	0
Negligent Manslaughter	0	0	0	0	0	0
Rape	1	2	1	1	1	1
Robbery	1	0	0	0	0	1
Aggravated Assault	6	6	7	15	9	3
Burglary	16	6	12	4	10	3
Theft	48	30	51	26	39	28
Motor Vehicle Theft	8	1	1	3	3	0
Simple Assaults	32	25	29	16	26	10
Arson	0	0	1	2	1	1
Forgery	2	3	3	2	3	0
Fraud	25	45	16	19	26	7
Embezzlement	0	0	0	1	0	0
Stolen Property	11	0	1	1	3	1
Vandalism	16	14	9	5	11	14
Weapons	3	0	0	0	1	1
Prostitution	0	0	0	0	0	1
Sex Offenses	9	3	0	8	5	0
Opium/Cocaine Sales	0	0	5	3	2	0
Marijuana Sales	10	1	4	2	4	4
Synthetic Narcotic Sales	3	1	4	1	2	0
Other Drug Sales	0	1	2	1	1	0
Opium/Cocaine Possession	0	0	3	5	2	2
Marijuana Possession	14	42	26	20	26	8
Synthetic Narcotic Possession	3	12	2	2	5	0
Other Drug Possession	0	6	7	4	4	2
Gambling Violations	0	0	0	0	0	0
Family Offenses	1	2	2	1	2	8
Driving While Intoxicated	51	53	31	23	40	35
Liquor Laws	61	54	31	7	38	14
Disorderly Conduct	33	51	43	54	45	35
Vagrancy	0	4	3	0	2	0
All Other (Except Traffic)	89	125	111	52	94	107
Curfew and Loitering	4	10	2	3	5	0
Runaways	0	0	0	0	0	0
Total Arrests	449	497	407	281	411	286

Assaults against officers in 2015 (LEOKA):

0

